

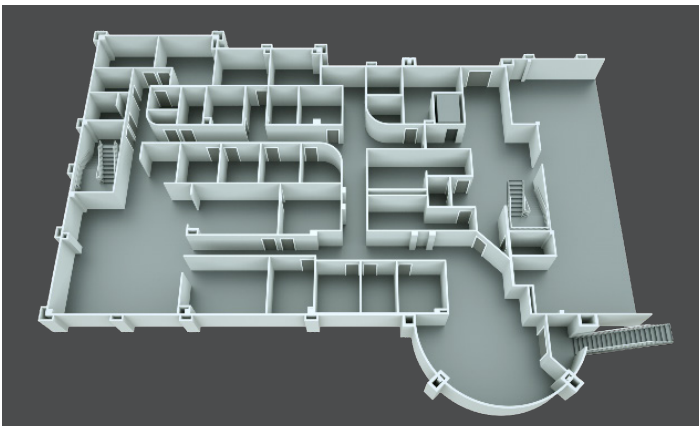
3D Floor Plan Design Options



QA Graphics provides high-end 3D floor plan graphics that can be integrated with most building automation systems. We can take your Revit Files, AutoCAD files, PDFs or sketches, and provide professional floor plan graphics. Our design team can create photorealistic 3D floor plan graphics to be as basic or as detailed as you wish. We have the knowledge to include ductwork, mechanical zoning, furniture, and dimensions.

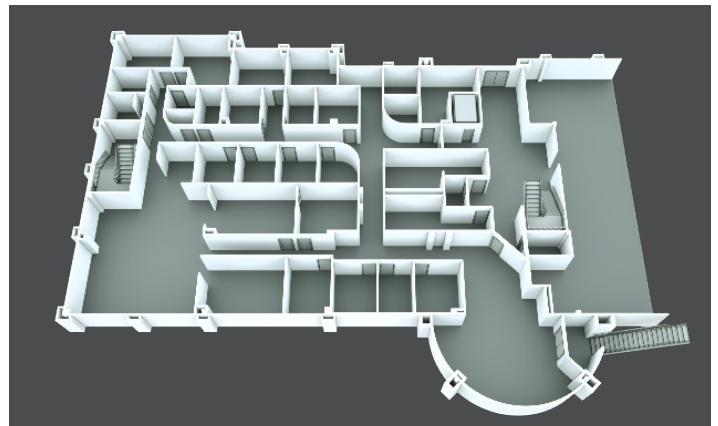
TEMPLATE OPTIONS

Select one of the four available templates.



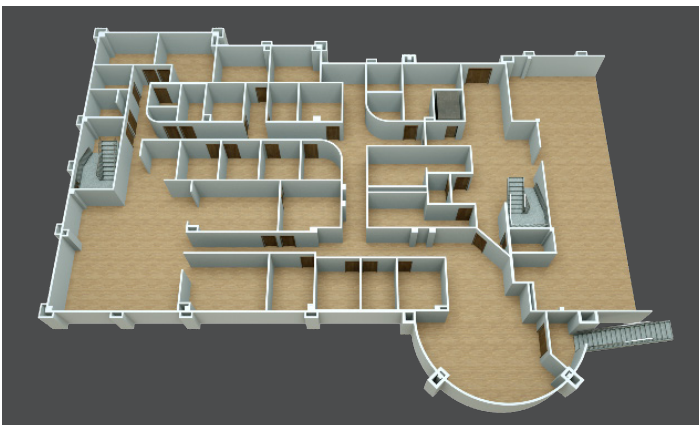
Template 1

Monochromatic floor with medium definition of doors and stairs shown in grey tones.



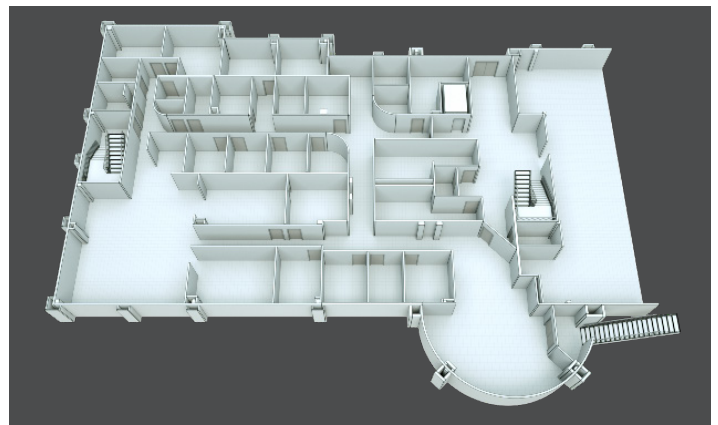
Template 2

Medium grey tone floor with white walls, and sharply defined doors and stairs.



Template 3

Realistic details shown in floor, doors and stairs while walls remain monochromatic.



Template 4

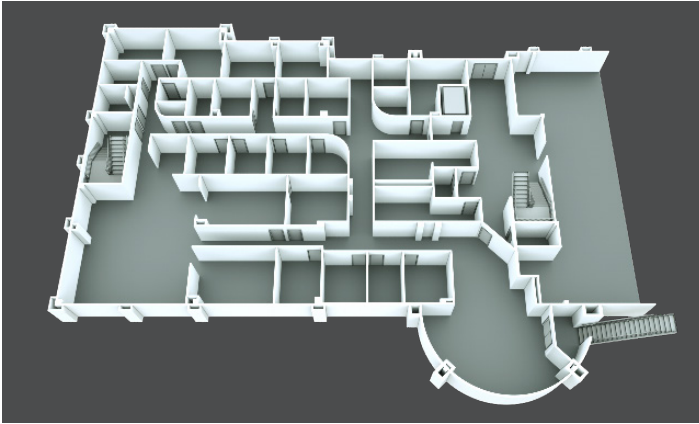
Lightly textured floor plan with a monochromatic architectural sketch feel.

See Page 2 for Package Options

PACKAGE OPTIONS

Select one of the packages to define the level of detail required in your floor plan.

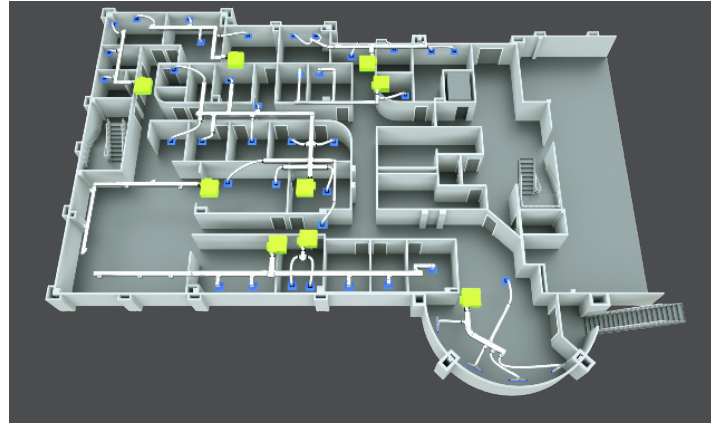
Additional Features that can be added to any Package Option: T-stat locations, room labels, square footages, key plan legends, windows, accurate materials and finishes, bathroom fixtures, plants, and exterior finishes (parking, sidewalks).



Example shows Template 2 with Bronze Package details.

Bronze Package

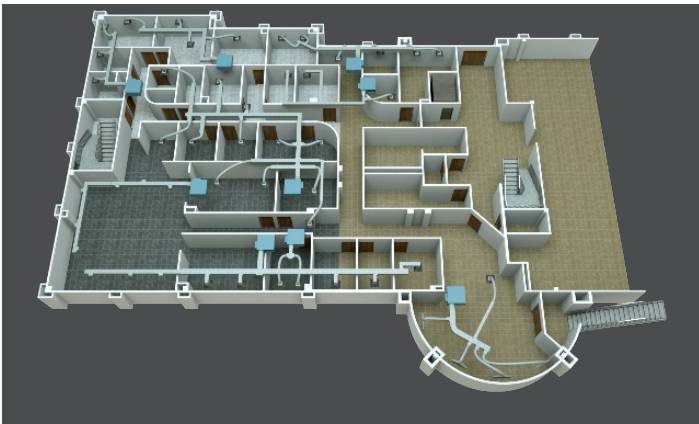
Floor plan includes walls, doors, stairs and elevators.



Example shows Template 1 with Silver Package details.

Silver Package

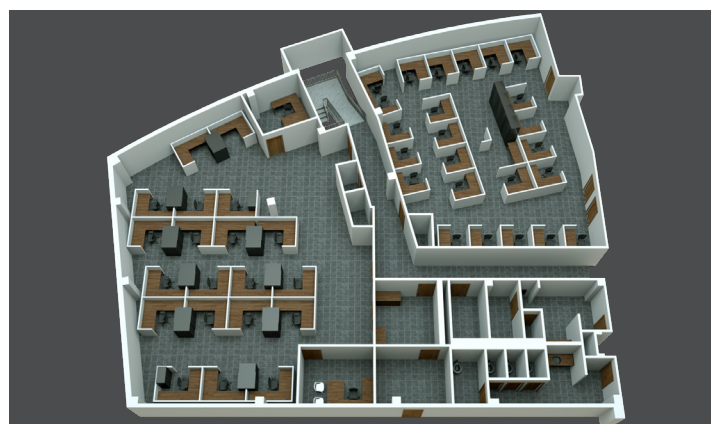
Floor plan and ductwork.



Example shows Template 3 with Gold Package details.

Gold Package

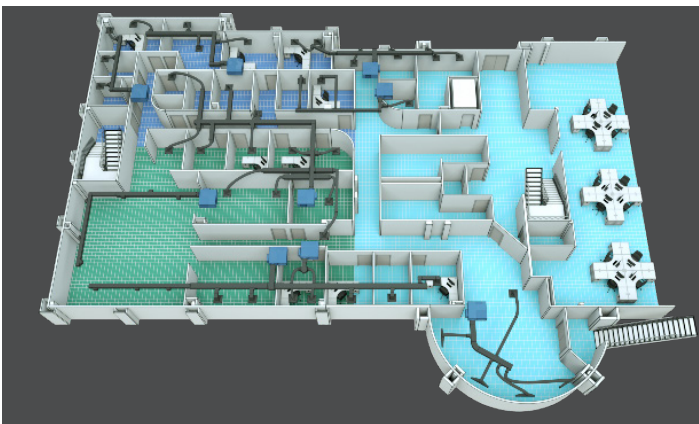
Floor plan, ductwork and colored zoning.



Example shows Template 1 with Platinum Package details.

Platinum Package

Floor plan and furniture.



Example shows Template 4 with Diamond Package details.

Diamond Package

Floor plan, ductwork, furniture and colored zoning.



Example shows a customized floor plan with Elite Package details.

Elite Package

Floor plan, furniture, ductwork and colored zoning with high customized detail.