

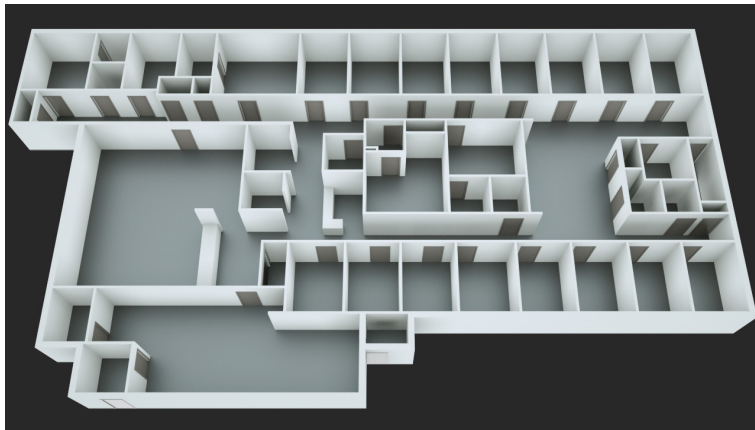
3D Floor Plan Design Options

Template Options

Select one of the four available templates. More package options are included on the back.

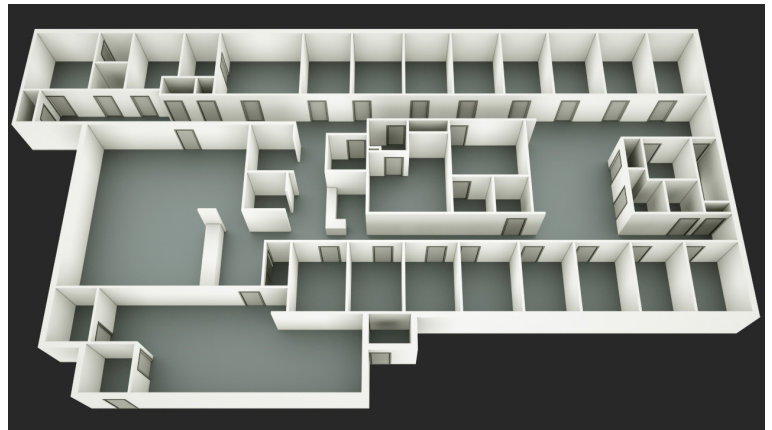


QA Graphics provides high-end 3D floor plan graphics that can be integrated with most building automation systems. We can take your Revit Files, AutoCAD files, PDFs, or sketches, and provide professional floor plan graphics. Our design team can create photorealistic 3D floor plan graphics to be as basic or as detailed as you wish. We have the knowledge to include ductwork, mechanical zoning, furniture, dimensions and more.



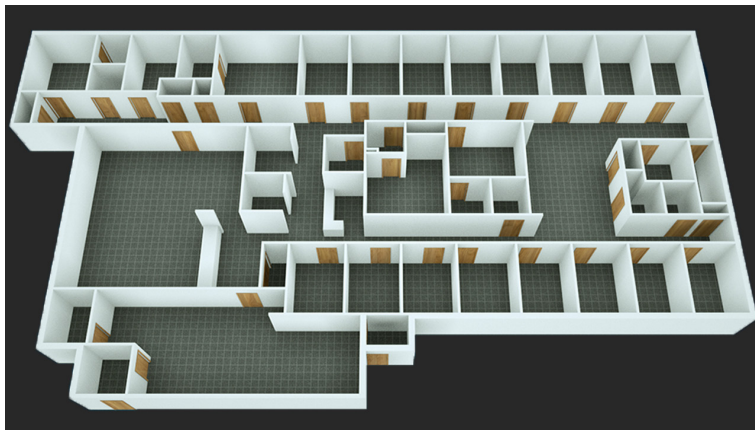
Template 1

Monochromatic floor with medium definition of doors and stairs shown in grey tones.



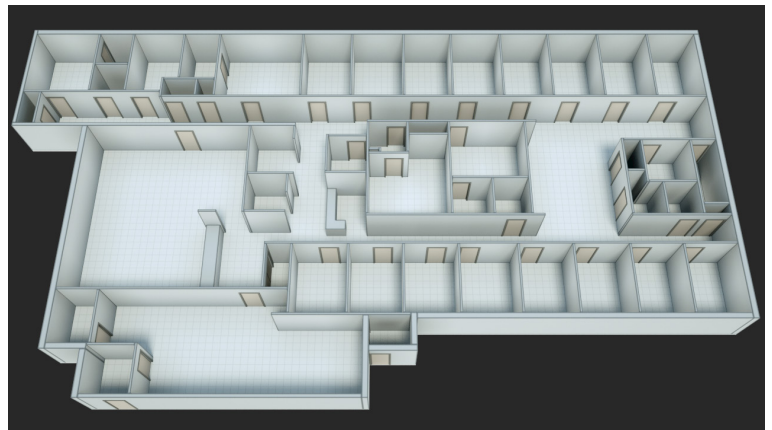
Template 2

Medium grey tone floor with white walls, and sharply defined doors and stairs.



Template 3

Realistic details shown in floor, doors, and stairs while walls remain monochromatic.



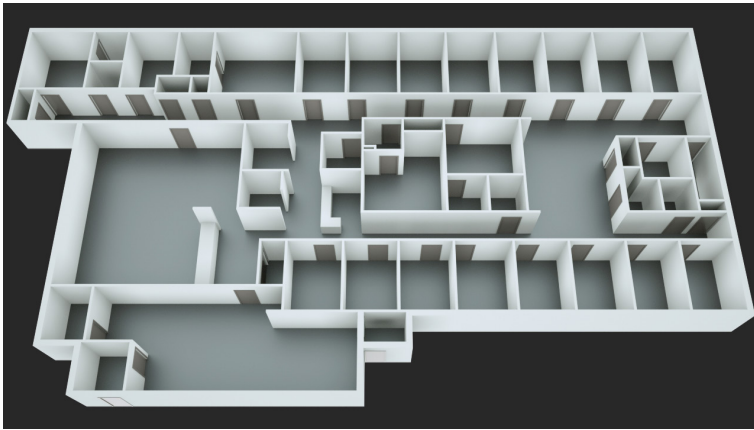
Template 4

Lightly textured floor plan with a monochromatic architectural sketch feeling.

Package Options

Select one of the packages to define the level of detail required in your floor plan.

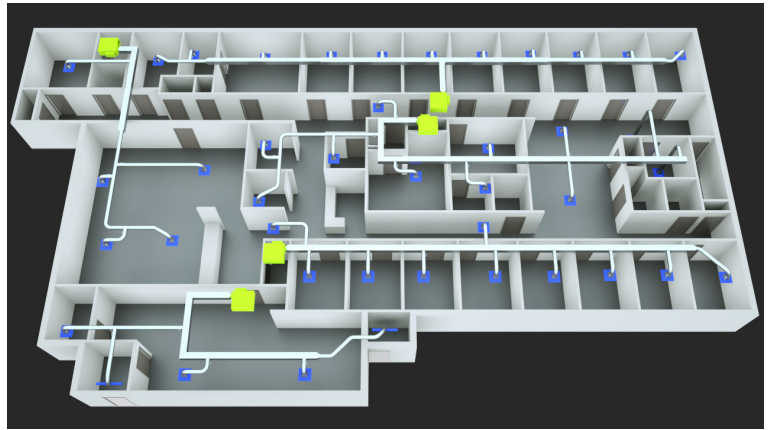
Additional features that can be added to any Package Option: T-stats, room labels, square footages, key plan legends, windows, accurate materials, bathroom fixtures, plants, and exterior items (parking, sidewalks).



**Template 1 with Bronze Package details.*

Bronze Package

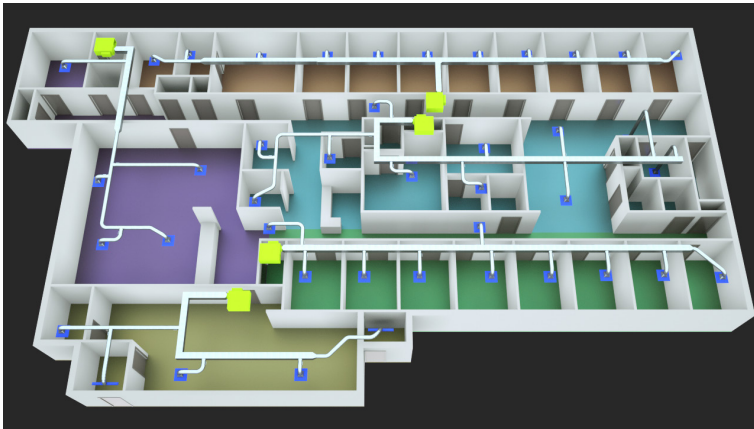
Floor plan includes walls, doors, stairs, and elevators.



**Template 1 with Silver Package details.*

Silver Package

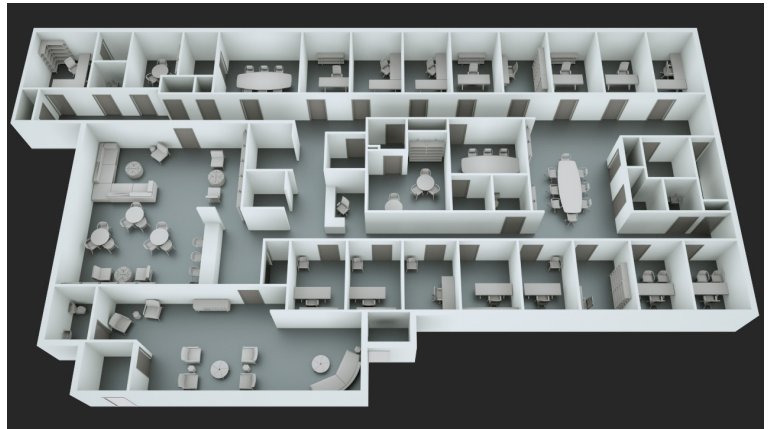
Floor plan with ductwork added.



**Template 1 with Gold Package details.*

Gold Package

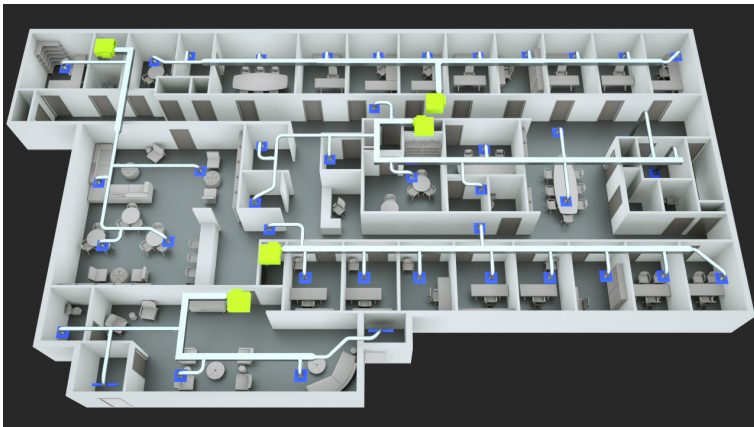
Floor plan with ductwork and colored zoning added.



**Template 1 with Platinum Package details.*

Platinum Package

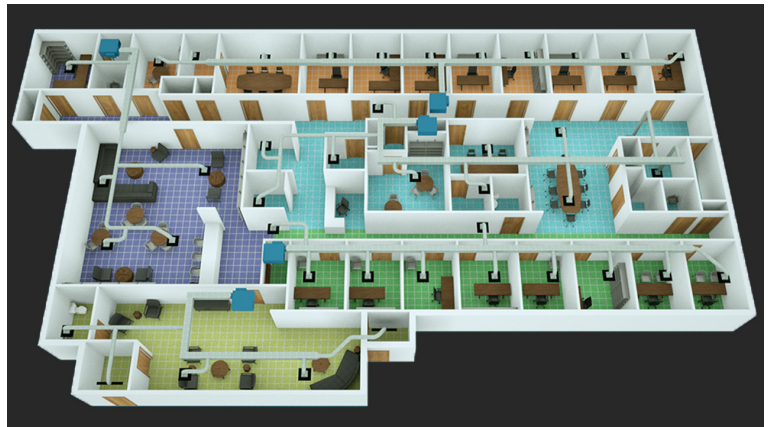
Floor plan with basic furniture added.



**Template 3 with Diamond Package details.*

Diamond Package

Floor plan with ductwork, basic furniture, and colored zoning added.



**Template 3 with Elite Package details.*

Elite Package

Floor plan with detailed furniture, ductwork, and colored zoning added.