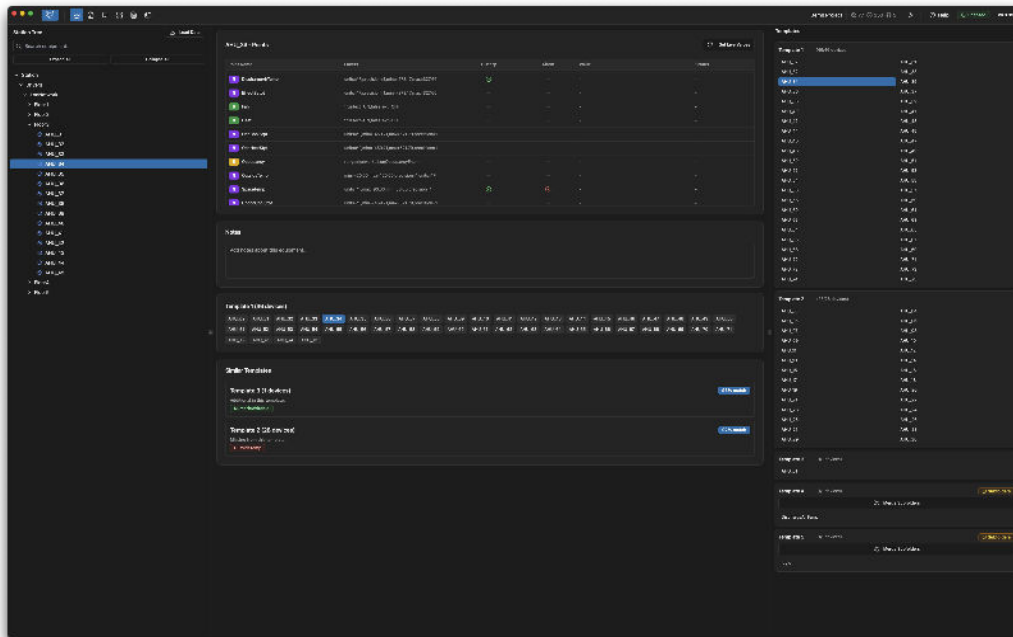


# Foxhound

## Assistant Tools for Niagara Framework

Streamline commissioning, catch errors before they cost you, and generate professional reports — all from one desktop application.



**QA GRAPHICS**  
[www.qagraphics.com](http://www.qagraphics.com)

# Contents

1. **Overview** — What Foxhound does and who it's for
2. **Getting Connected** — Live station connection setup and best practices
3. **Station Explorer** — Browsing equipment, points, and templates
4. **QA Review Checks** — Automated quality checks for your station
5. **Commissioning Export** — Generating points list schedules
6. **Custom BQL Queries** — Running and saving custom queries
7. **Dashboards** — Building configurable data visualizations
8. **Professional Reports** — Generating branded site reports
9. **Portfolio** — Managing all your saved project items

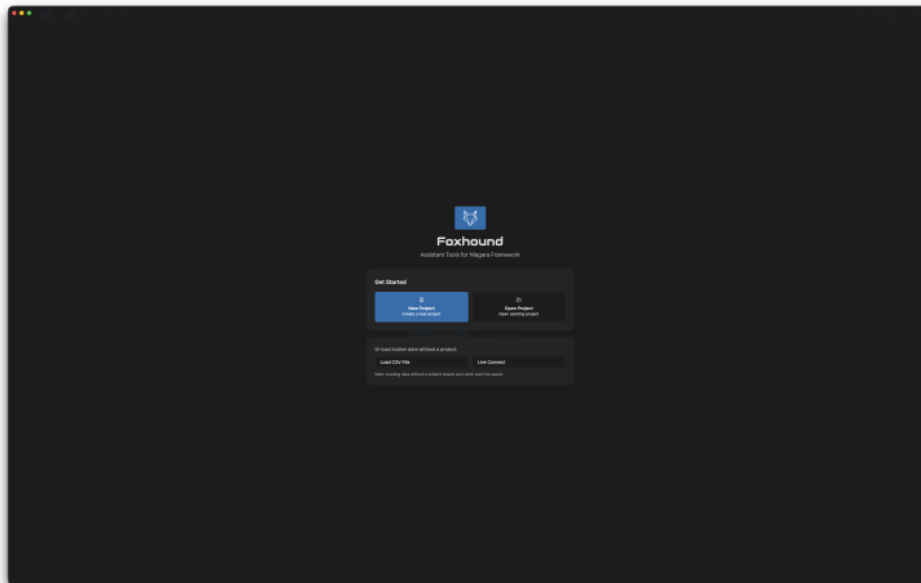
# 1. Overview

Foxhound is a desktop application by QA Graphics that connects directly to your Tridium Niagara station, giving building automation integrators a comprehensive set of tools for exploring, reviewing, and documenting their work.

Whether you're commissioning a new site, performing quality checks on an existing installation, or generating documentation for a client handoff, Foxhound brings everything you need into one organized workspace.

## Key Capabilities

- **Live Station Connection** — Connect to any Niagara station via REST API over HTTPS to pull live data
- **Station Explorer** — Browse your station tree filtered to equipment, with auto-template sorting
- **QA Review Checks** — Run automated checks for point names, statuses, facets, history/alarm extensions, and graphics
- **Commissioning Export** — Generate a points list schedule as an exportable Excel spreadsheet
- **Custom BQL Queries** — Write and run your own BQL queries with saveable results
- **Dashboards** — Build configurable widgets with live or historical data
- **Professional Reports** — Generate branded site reports with the sections you choose
- **Portfolio** — Manage all saved reports, dashboards, and query results in one place



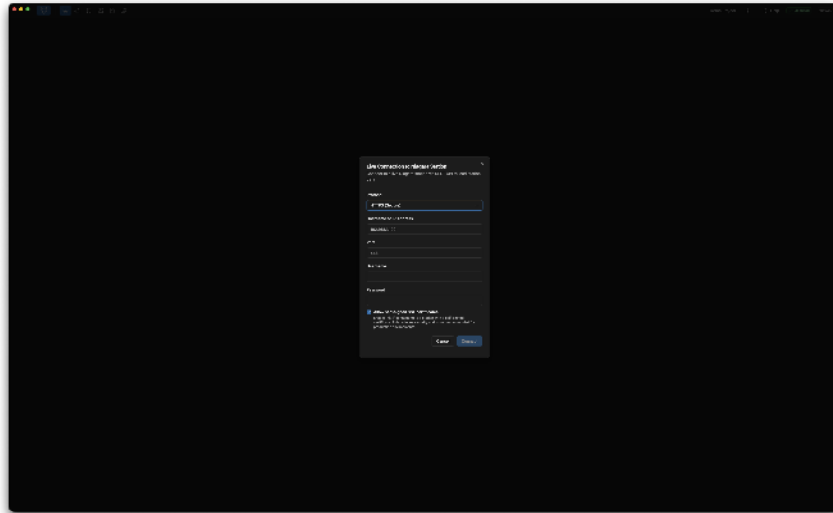
Foxhound launch screen — Create a new project, open an existing one, load a CSV, or connect directly to a live station.

## 2. Getting Connected

Foxhound connects to Niagara stations via REST API over HTTPS. You can connect directly to explore a station without creating a project, or create a project first to save all your data and uploaded files.

### Connection Setup

Enter your station's hostname or IP address, port, and credentials. The connection uses HTTPS (secure) by default, with support for self-signed SSL certificates.



Live connection dialog — HTTPS with self-signed SSL certificate support.

### Best Practices

- Create a dedicated user specifically for the Foxhound connection
- Use a non-admin account with limited privileges for security
- Set the HttpDigestScheme on the user, which is found in the Baja palette
- Self-signed SSL certificates are supported but are not recommended for production environments

### Project Files

Your Foxhound project file contains all your data — uploaded files, saved queries, dashboards, reports, and notes. Open a project to pick up right where you left off. You can also explore a station without creating a project if you just need to look around.

# 3. Station Explorer

The Station tab is your window into the Niagara station. It presents a clean, organized view of your equipment and points, making it easy to understand the structure of any site.

## Equipment Tree (Left Pane)

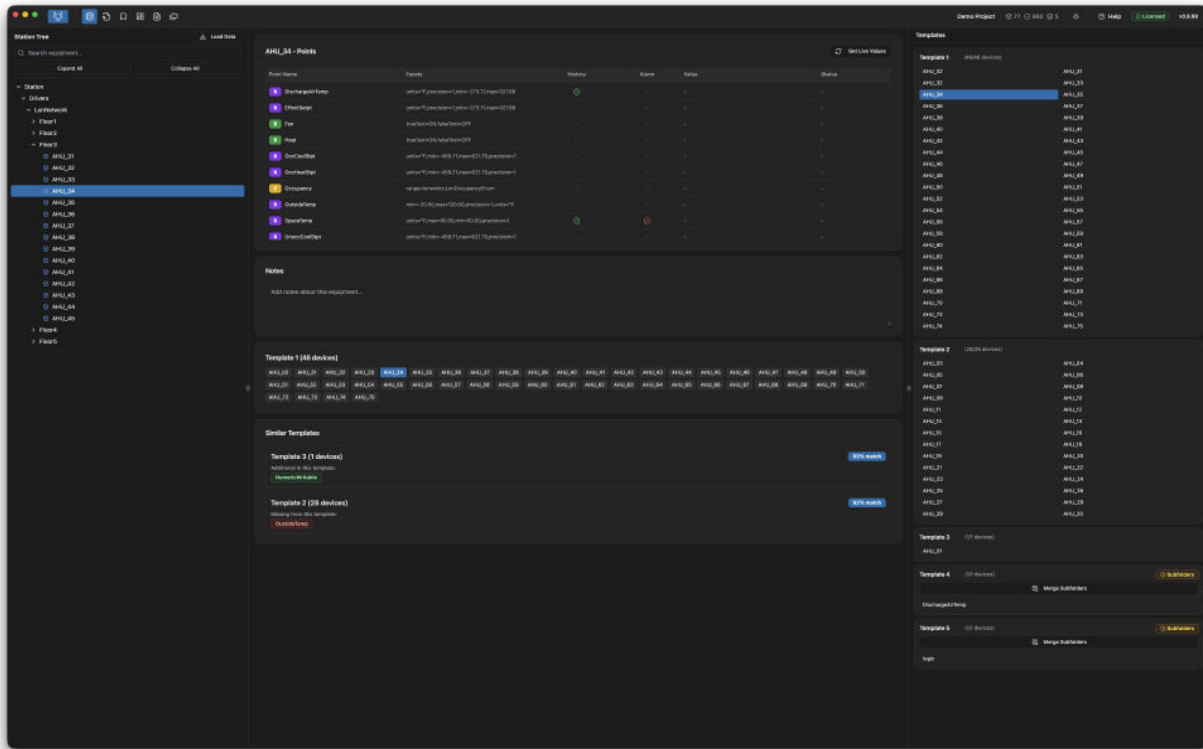
The left side reflects the station tree, trimmed down to show just equipment. A search function lets you find specific equipment quickly, and you can hide or exclude any controller or equipment from view.

## Equipment Detail (Center Pane)

- View all points associated with the selected equipment
- See each point's type, facets, and whether history/alarm extensions are present and enabled
- Query live values and statuses with a single click
- Click to copy any point path to the clipboard
- Add notes on individual equipment for your project records
- Equipment is auto-sorted into templates where all points match
- Shows other equipment outside templates and highlights differences between similar templates

## Templates (Right Pane)

The right pane lists all the templates with the equipment included in each. There's a chance some subfolders may mistakenly get marked as equipment — these will have the option to merge with the parent equipment if that's the case.



Station Explorer — Equipment tree on left, point detail in center, templates on right.

# 4. QA Review Checks

The Review tab provides a series of automated checks across your station to help flag common issues. These checks are designed to catch mostly minor errors that are easy to miss during commissioning. They should not be taken as 100% definitive but serve as a helpful second set of eyes.

## Point Name Check

Does a quick check for potential typos by finding similar point names across your station and flagging them for review.

## Point Status Check

Gets you a list of all points currently in an abnormal state — disabled, fault, or overridden — so you can address them.

## Facet Check

Makes sure units are set on all applicable points and that boolean text is properly configured.

## History Extension Check

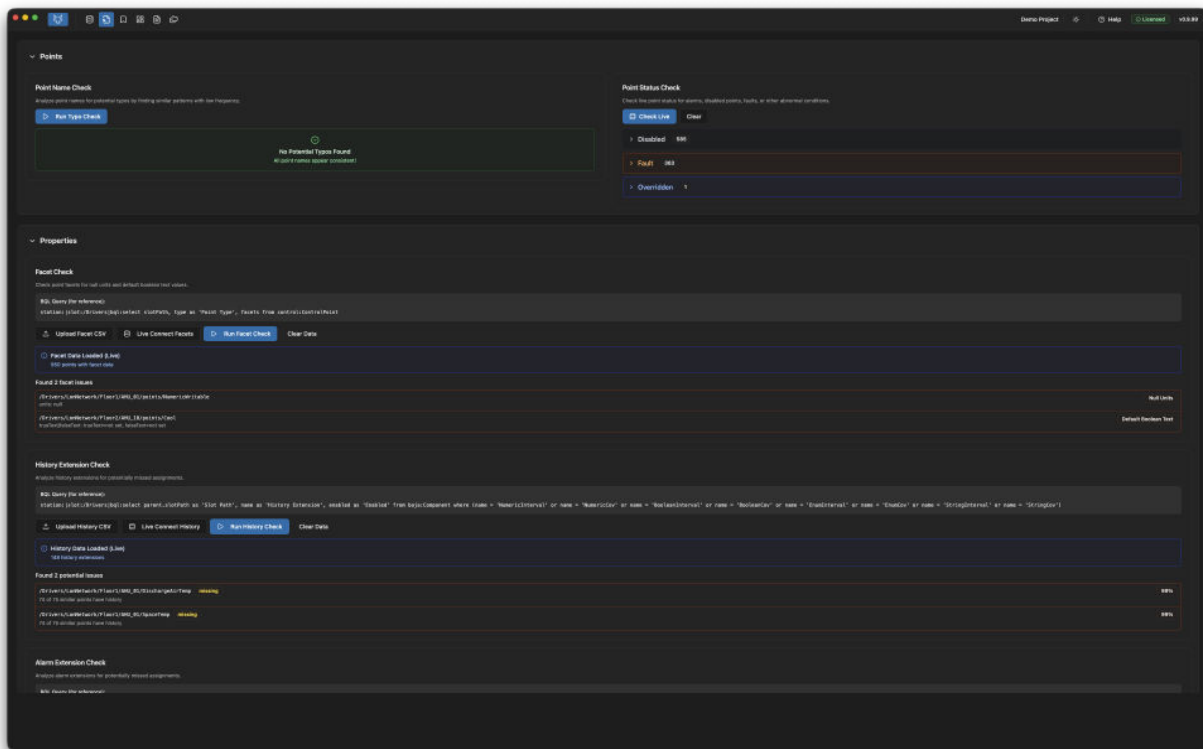
Does a smart check to make sure everything that should have a history extension does, and that those extensions are enabled.

## Alarm Extension Check

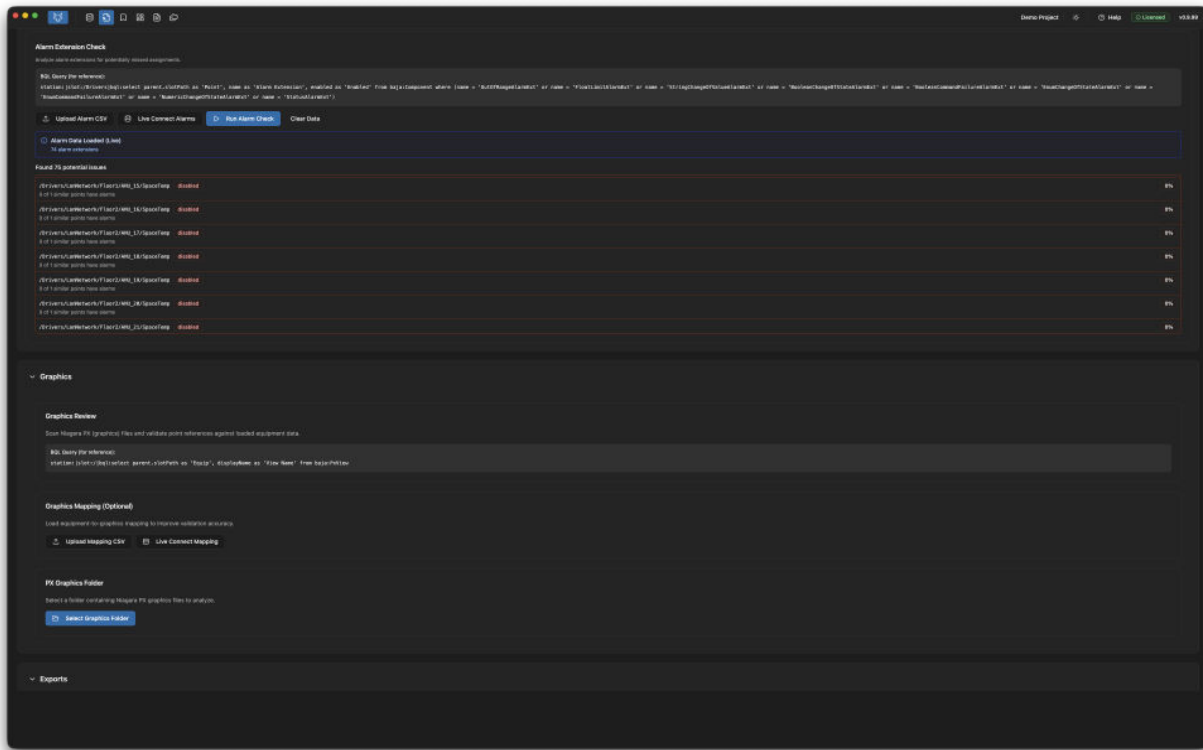
Operates the same way as the history check, applied to alarm extensions across all equipment.

## Graphics Review

Checks to make sure all points from equipment are represented on a graphic. Also flags duplicate bindings if detected.



Review tab — Point name check, point status check, facet check, and history extension check.



Review tab continued — Alarm extension check, graphics review, and commissioning export section.

The last section on the review tab generates an exportable Excel spreadsheet — a points list schedule you can hand directly to your commissioning agent.





# 7. Dashboards

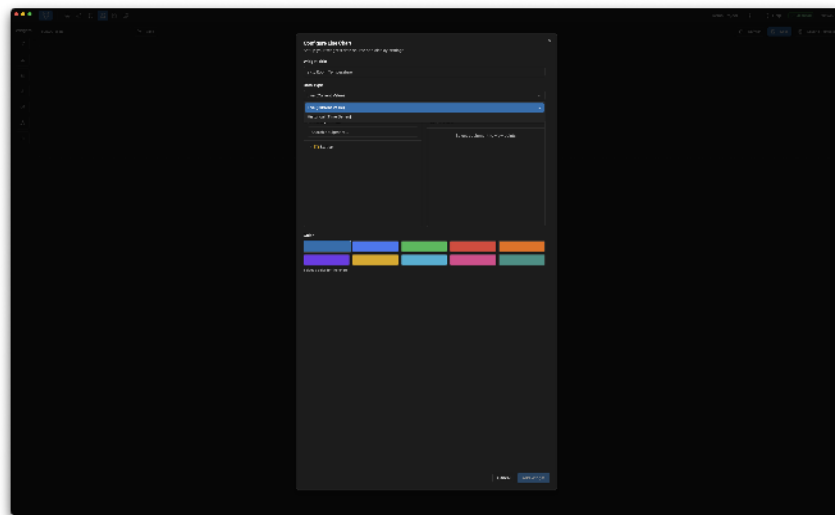
Foxhound includes a dashboard generator with configurable widgets for visualizing your station data. Dashboards can use live current values or historical time series data, giving you flexibility in how you monitor and present information.

## Widget Types

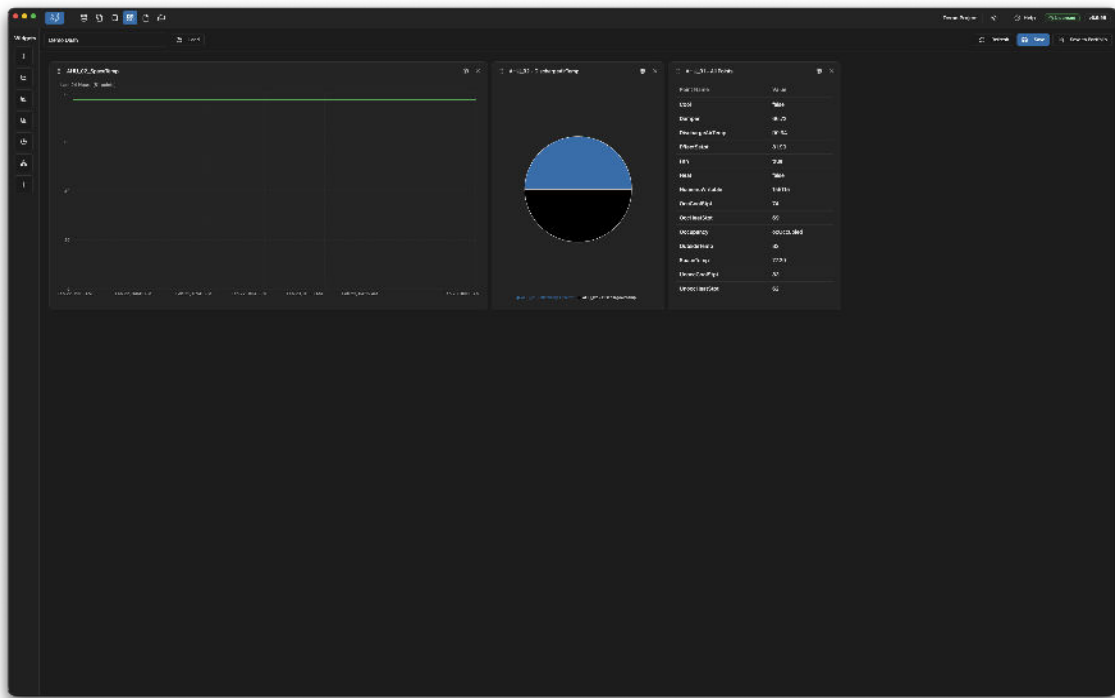
- **Line Chart** — Track values over time with single or multiple data series
- **Pie/Donut Chart** — Visualize proportional data with color-coded segments
- **All Points Table** — Display all point values for a piece of equipment in a table format

## Data Sources

Each widget can be configured to pull from either Live (Current Value) data or Historical (Time Series) data. You select the equipment and points you want to visualize, choose a chart color, and add the widget to your dashboard.



Dashboard widget configuration — Choose data type, equipment, points, and chart color.



Active dashboard — Line chart, pie chart, and all-points table showing live station data.

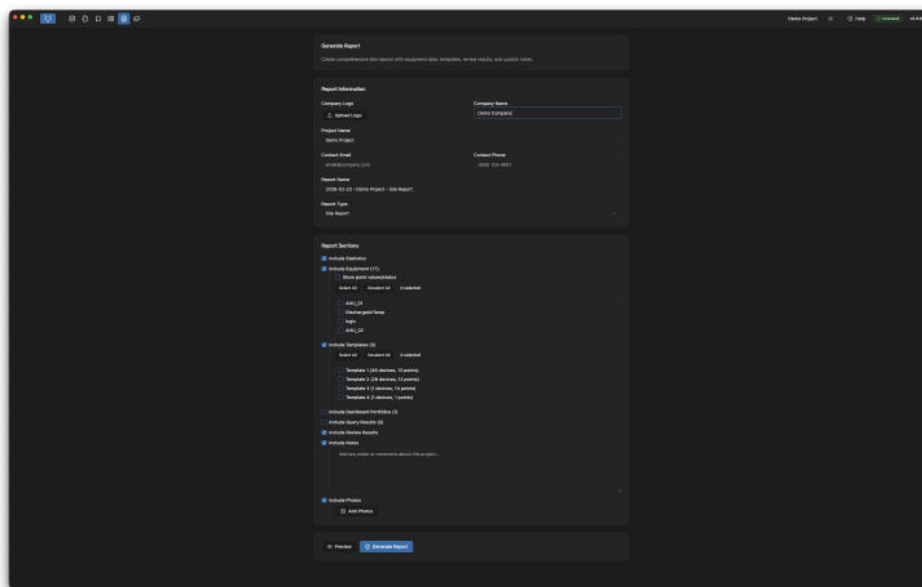
Save your dashboard setup to include in project reports and the portfolio.

# 8. Professional Reports

Foxhound's report generator creates comprehensive site documentation with your company branding. Enter your project information, upload a company logo, and choose which sections to include.

## Report Configuration

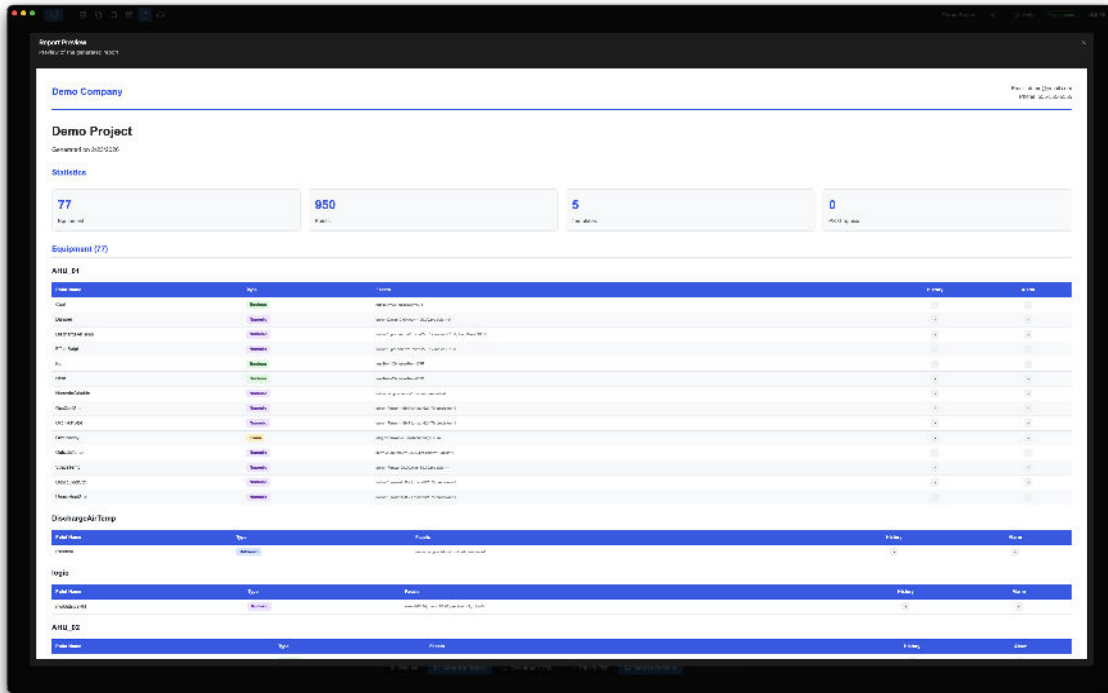
- **Report Information** — Company name, logo, project name, contact email, phone, and report name
- **Report Type** — Choose between a full site report or a single equipment report
- **Include Statistics** — Equipment counts, point totals, template counts
- **Include Equipment** — Detailed point-by-point data with option to show point values/statuses
- **Include Templates** — Template breakdowns showing equipment groupings
- **Include Dashboards & Portfolios** — Embedded dashboard snapshots
- **Include Query Results** — Saved BQL query results in the report
- **Include Review Results** — Summary of all QA check findings
- **Include Notes** — Custom project notes and comments
- **Include Photos** — Add project photos to the report



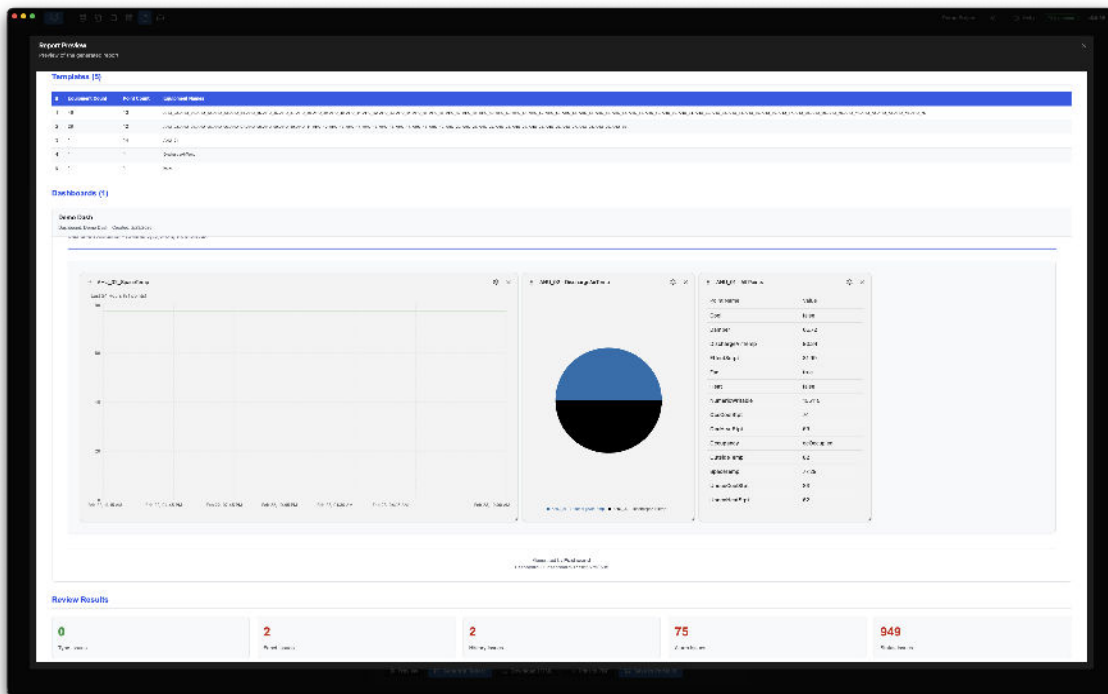
Report configuration — Set project info, choose sections, preview before generating.

# Report Preview

Before generating the final report, you can preview it to make sure everything looks right. The preview shows all selected sections with your company branding.



Report preview — Statistics, equipment counts, and detailed point data for each piece of equipment.

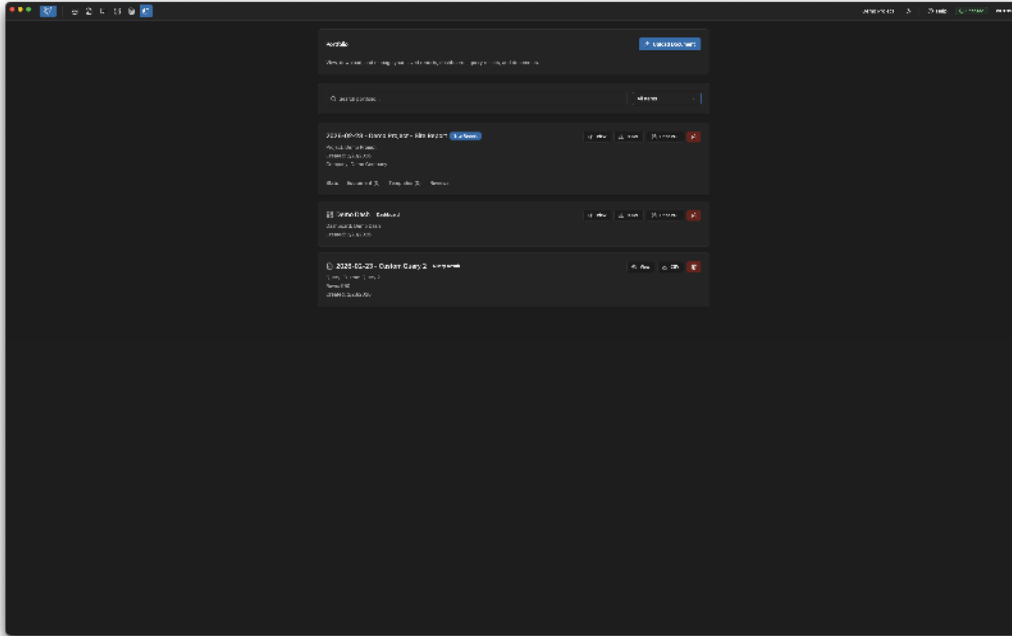


Report preview continued — Templates, embedded dashboards, and review results summary.

# 9. Portfolio

The Portfolio page is where all your saved reports, dashboards, query results, and documents live. Everything defaults to a date-project-type naming format for easy sorting and organization.

- View, download, and manage all saved items
- Filter by type — reports, dashboards, queries, documents
- Search across all saved items
- Export as HTML, PDF, or CSV depending on the item type
- Upload additional documents to your project



Portfolio — All saved reports, dashboards, and query results with filtering, search, and export options.

## Learn More

Foxhound is developed by QA Graphics. For more information, downloads, and support, visit [www.qagraphics.com](http://www.qagraphics.com).